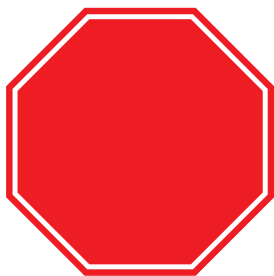


FREAK ATHLETE

ABX Assembly Guide

Important Notice



The written instruction manual is meant to be a supplement to the ABX Assembly video and Getting Started Video.

Go to FreakAthlete.co/ABXGuide for full video instructions.

It is critical to follow the full Assembly Video and the Getting Started video for your own safety.

FREAK ATHLETE

ABX Guide



ABX **Full Assembly**



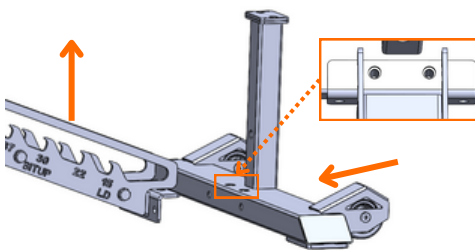
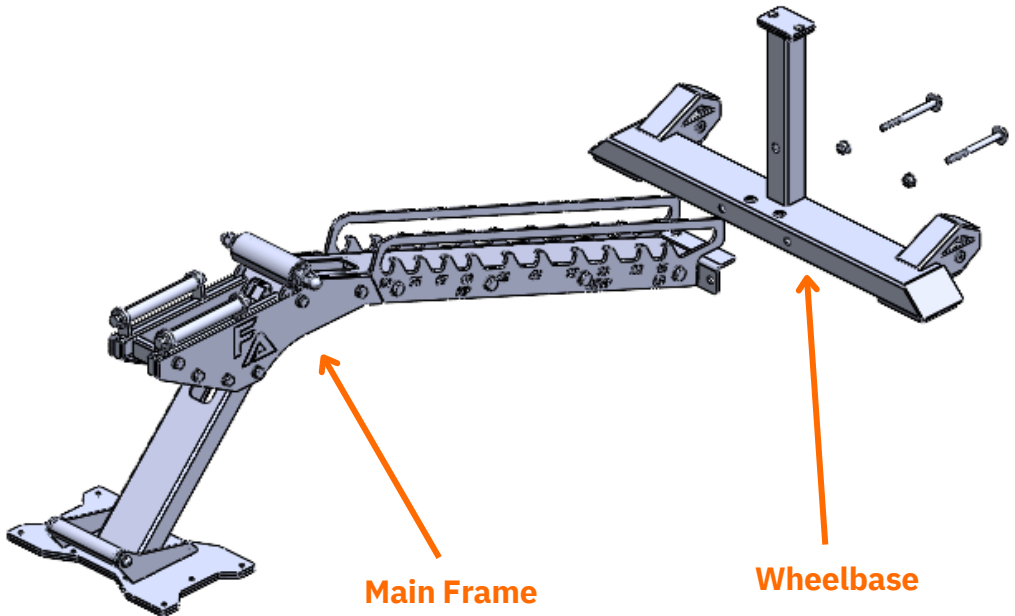
ABX **Getting Started**

Steps 1: Installing Wheelbase to the Main Frame

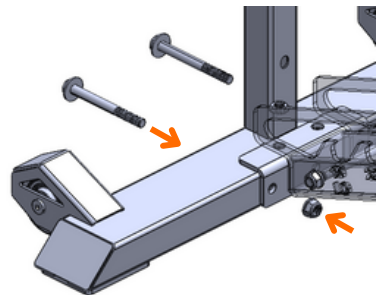
Hardware & Parts

1. Install the wheelbase to the Mainframe.
2. Hand tighten using Bolt, washer and nut.

- Main Frame
- Wheelbase
- 16/18 Wrench



a. Lift the mainframe then slide through the Wheelbase, make sure the hole are align to each other.



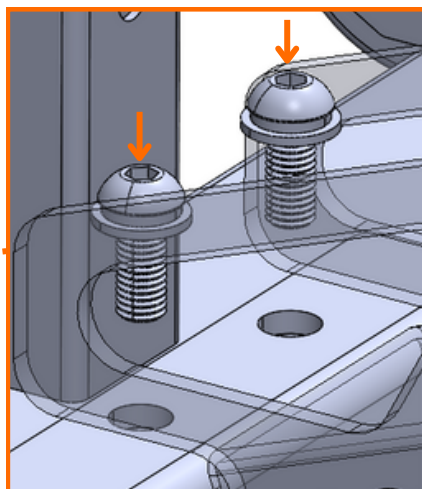
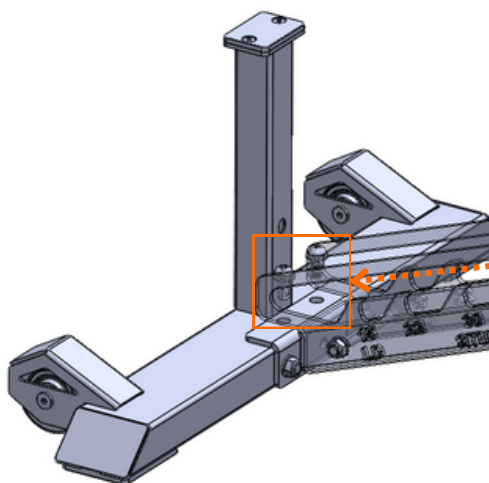
b. Put on the Bolt and washer to the hole and hand tight it with nut. Repeat the process on the other side.

Steps 1: Installing Wheelbase to the Main Frame

Hardware & Parts

1. Put on the small bolt with spring and flat washer, make sure the spring washer at the middle of bolt and flat washer.
2. Fully tighten bolts and nuts using the tools provided.

- Main Frame
- Wheelbase
- 16/18 Wrench



c. Put on the Small bolt with spring washer and flat washer to the hole on the top of base, Simply hand tight.

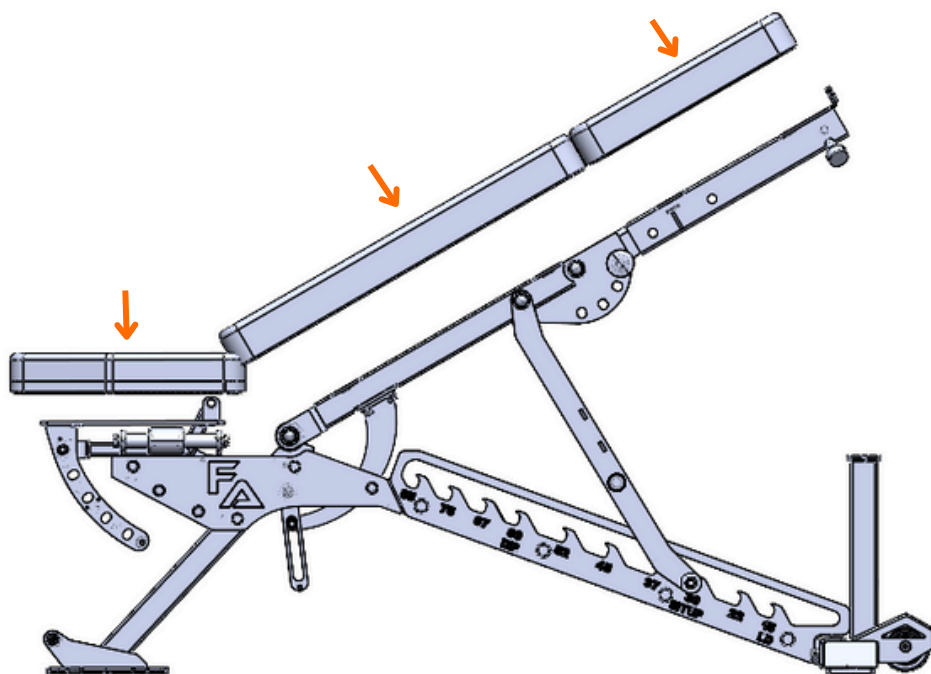
d. Fully tighten together all the bolts and nuts using the wrenches and allen key provided.

Steps 2: Pads installation

Hardware & Parts

1. Put on the small bolt with spring and flat washer, make sure the spring washer at the middle of bolt and flat washer.
2. Fully tighten bolts and nuts using the tools provided.

- Main Frame
- Seat, Back and headrest pads



a. Put on the pads to the Seat, Back and head frame.

ABX Full Assembly

- Main Frame
- Seat, Back and headrest pads

